
MEDFORD LAKES
COLONY

2024
Lakes & Lake Leaders
Program



Our Lakes

21 Lakes (in five chains)

Headwaters:

Upper Aetna
Algonquin
Meeshaway
Mescha
Sioux

2 Canals

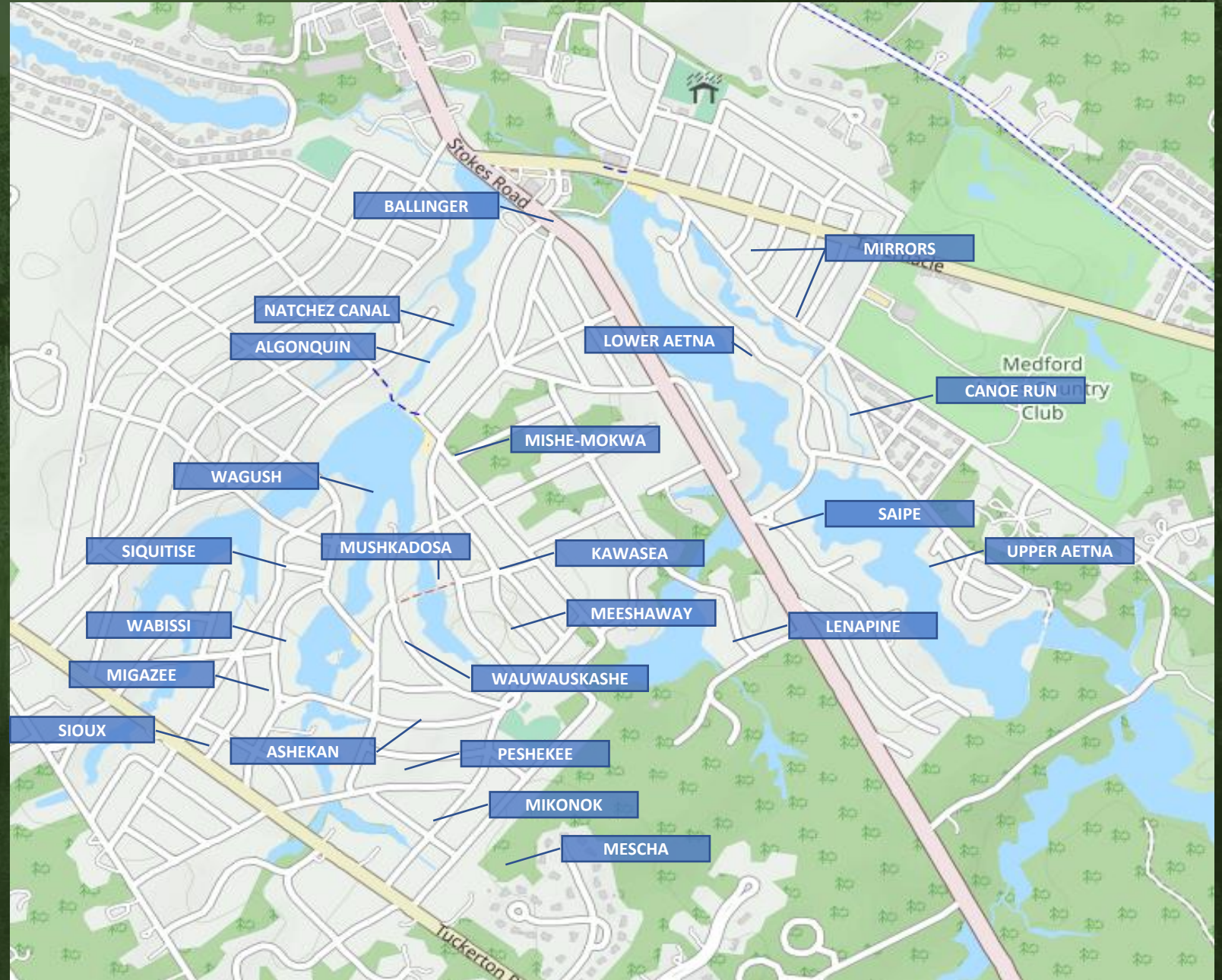
Natchez
Wagush Levee

2 Lagoons

Ballinger
Siquitise

1 Run

Canoe Run



Primary Issues & Maintenance

**Lake Water Volumes
and Water Levels**

Weed Growth

Water Quality

Lake Cleaning

Aquatic Life

**Compliance Programs
(NJDEP and pinelands)**





LAKES RESTORATION

- **Dedicated and Restricted Fund**
- **Funded by \$145 Annual Fee from Dues, about \$207,000 per annum**
 - **Maintain Water Quality**
 - **Maintain Dams and Structures**
 - **Insure Compliance with all Federal and State codes**



LAKES RESTORATION

- **Specifically intended for *limited purposes*:**
 - Dredging (but not “*lake cleaning*”)
 - Capital Projects, including dam replacements and repairs
 - Capital Equipment, such as aerators, fountains, pumps, etc.
 - Repair of the Pumping System (Ballinger to Algonquin & Ballinger to Sioux)
 - Engineering fees, inspections, preparation of Emergency Plans
 - Legal Fees
 - Loan Payments



LAKES RESTORATION

2023 Lake Restoration Activity

- **Purchase 2 “Algae Killers”** – pulsar anti-algae ultrasound devices installed In Sioux and Mikinok Lakes ...(\$15,000 cost)
- **Purchase 4 Aerator Compressors and 24 Bubblers** for Sioux (4), Migazee (4), Wabissi (2), Mikonok (5), Peshekee (3), Ballinger (5) and Wagush Levee (1)....(\$57,000 cost)
- **Lake Wauwauskashe Project** (Engineering Phase) (\$100,000 cost + \$300,000 estimate)
- **Wagush Trail Drainage Pipe Replacement** (Engineering Phase)
(\$15,000 cost + \$100,000 estimate)
- **Algonquin Spillway Repair**
- **Algonquin Pond Bulkhead and Landscaping**
- (\$12,000 cost)

LAKES RESTORATION



LAKES RESTORATION



HF 3 Plus



Legend

Compressor Cabinet



AirStation



BottomLine Tubing

Optional Equipment



Shoreline Valve Box

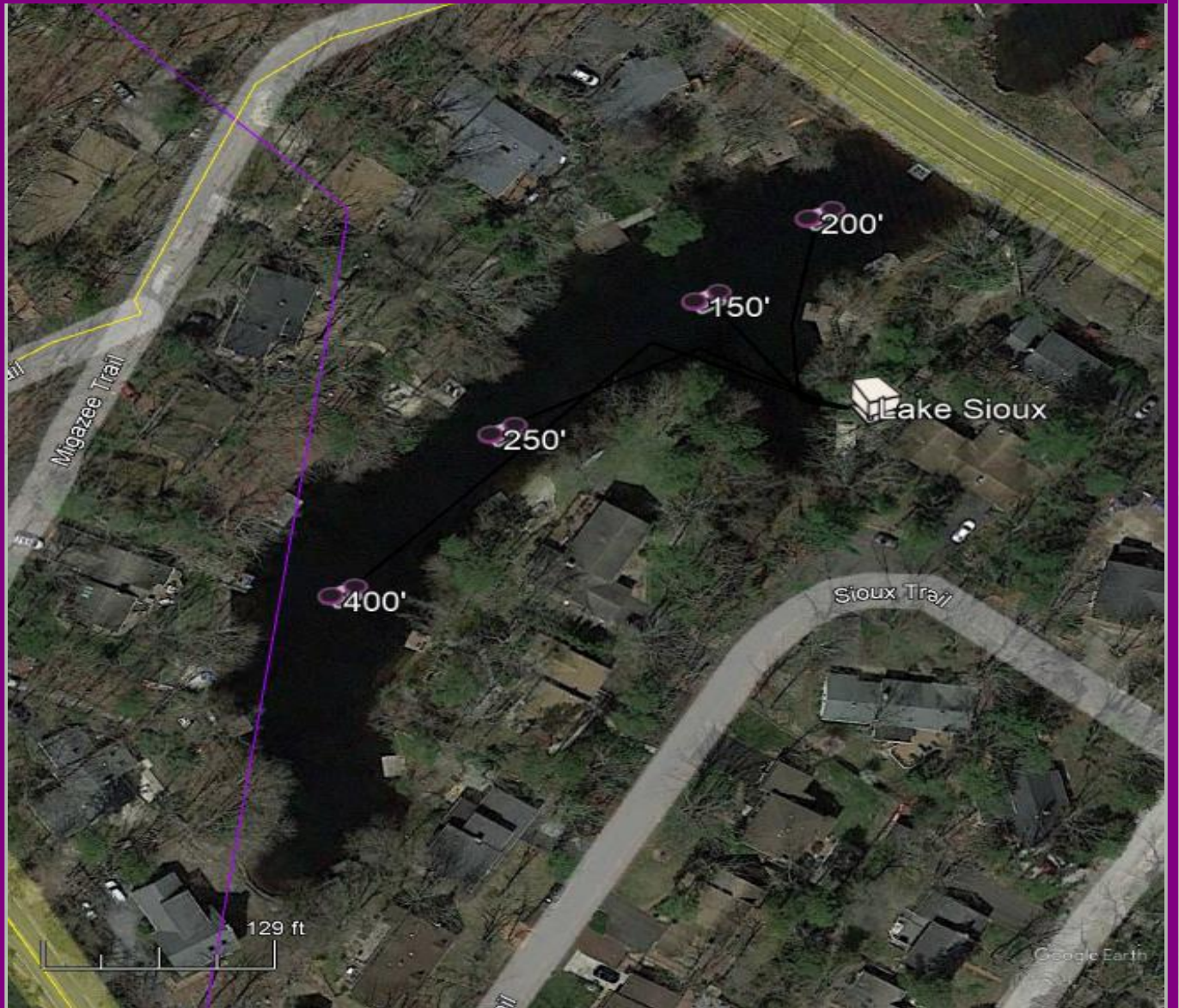


1" PVC Pipe

Site and System Specifications

Surface Acres:	1.6
Perimeter Feet:	1,676
Lake Volume, Gal.:	3,332,888
Total Acre Feet:	10.2
# of AirStations:	4
CFM / AirStation:	1.25
GPM / AirStation:	1,616
Daily Pumpage:	9,306,317
Turnovers/Day:	2.79
System PSI:	7.6

Date: 9/15/23



LAKES
RESTORATION

LAKES RESTORATION



SOLitude Lake Management Lake Minonok

Shared HF 7XL2



Legend



Compressor Cabinet



AirStation

BottomLine Tubing

Optional Equipment



Shoreline Valve Box



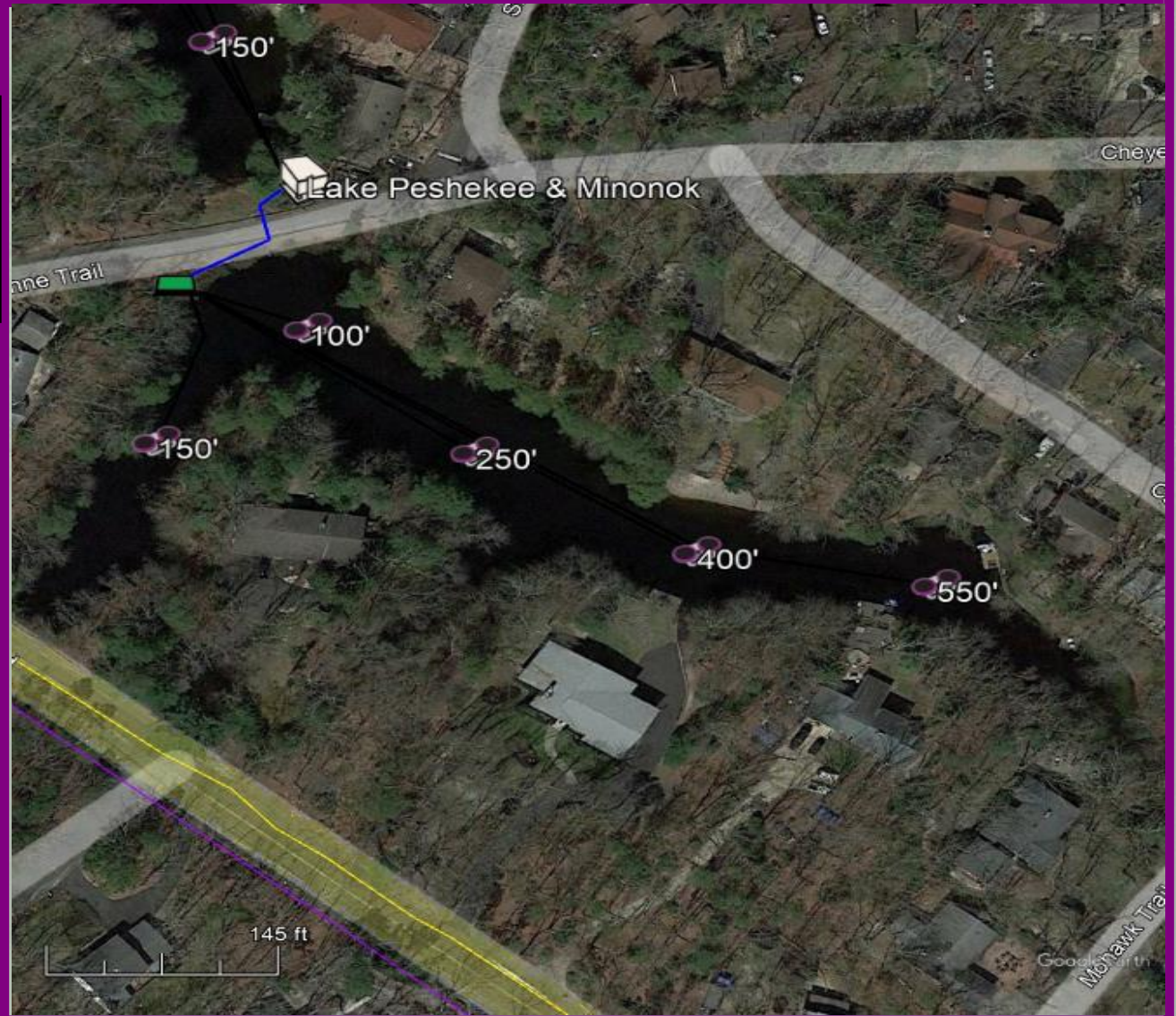
1" PVC Pipe

Site and System Specifications

Surface Acres: 1.8
Perimeter Feet: 2,200
Lake Volume, Gal.: 2,926,694
Total Acre Feet: 9.0

of AirStations: 5
CFM / AirStation: 1.25
GPM / AirStation: 1,043
Daily Pumpage: 7,512,912
Turnovers/Day: 2.57
System PSI: 7.4

Date: 9/15/23



LAKES RESTORATION



SOLitude Lake Management Lake Peshekee

Shared HF 7XL2



- Legend**
- Compressor Cabinet
 - AirStation
 - BottomLine Tubing

- Optional Equipment**
- Shoreline Valve Box
 - 1" PVC Pipe

Site and System Specifications

Surface Acres: 1.3
 Perimeter Feet: 1,400
 Lake Volume, Gal.: 2,718,551
 Total Acre Feet: 8.3

of AirStations: 3
 CFM / AirStation: 1.25
 GPM / AirStation: 1,447
 Daily Pumpage: 6,252,682
 Turnovers/Day: 2.30
 System PSI: 7.4

Date: 9/15/23



LAKES RESTORATION



SOLitude Lake Management Lake Migazee

SHARED AIR 6XL2



Legend



Compressor Cabinet
AirStation



BottomLine Tubing

Optional Equipment



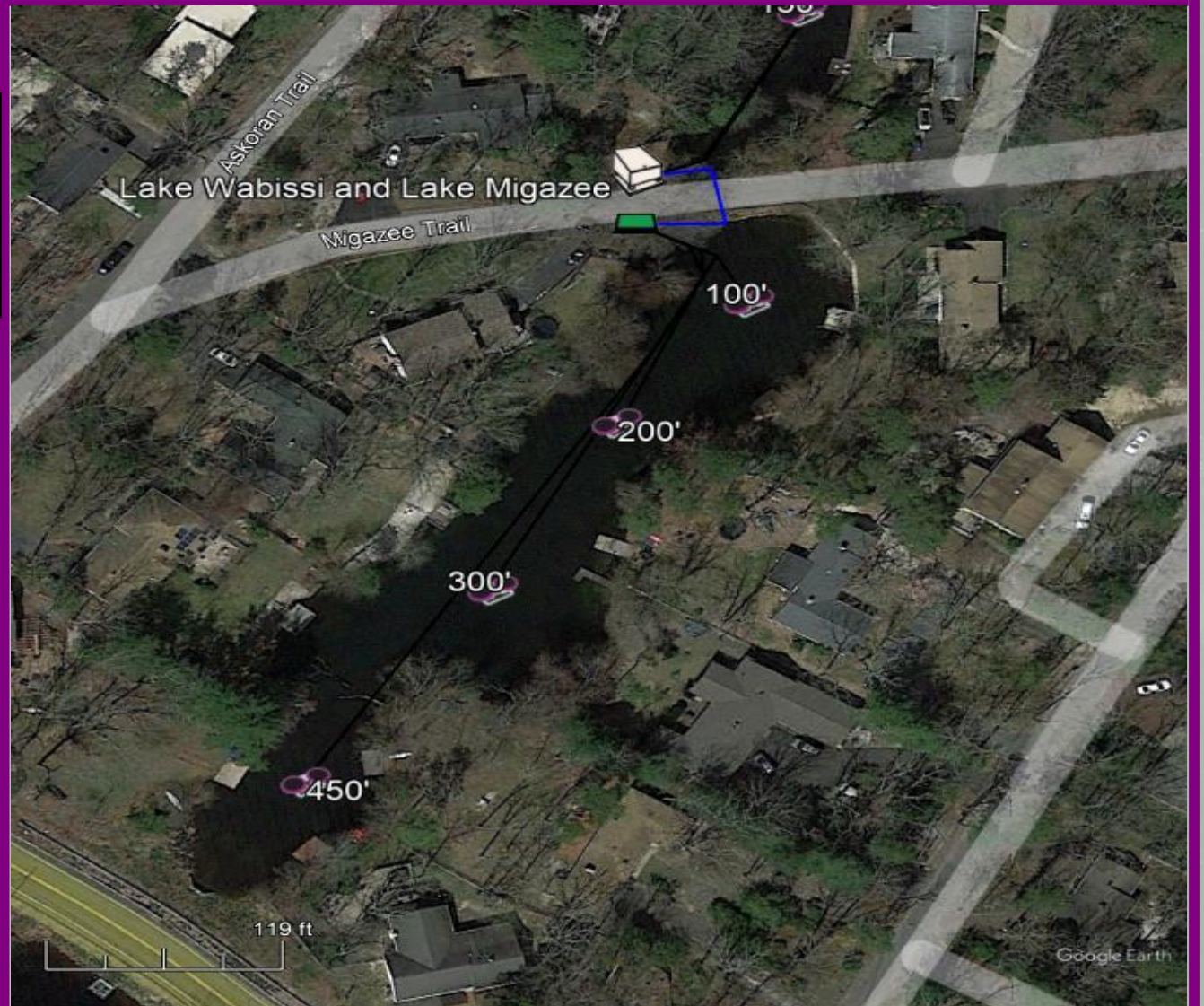
Shoreline Valve Box
1" PVC Pipe

Site and System Specifications

Surface Acres: 1.1
Perimeter Feet: 1,275
Lake Volume, Gal.: 2,257,038
Total Acre Feet: 6.9

of AirStations: 4
CFM / AirStation: 1.46
GPM / AirStation: 1,580
Daily Pumpage: 9,098,376
Turnovers/Day: 4.03
System PSI: 7.6

Date: 9/15/23



LAKES RESTORATION



SOLitude Lake Management Lake Wabissi

SHARED AIR 6XL2

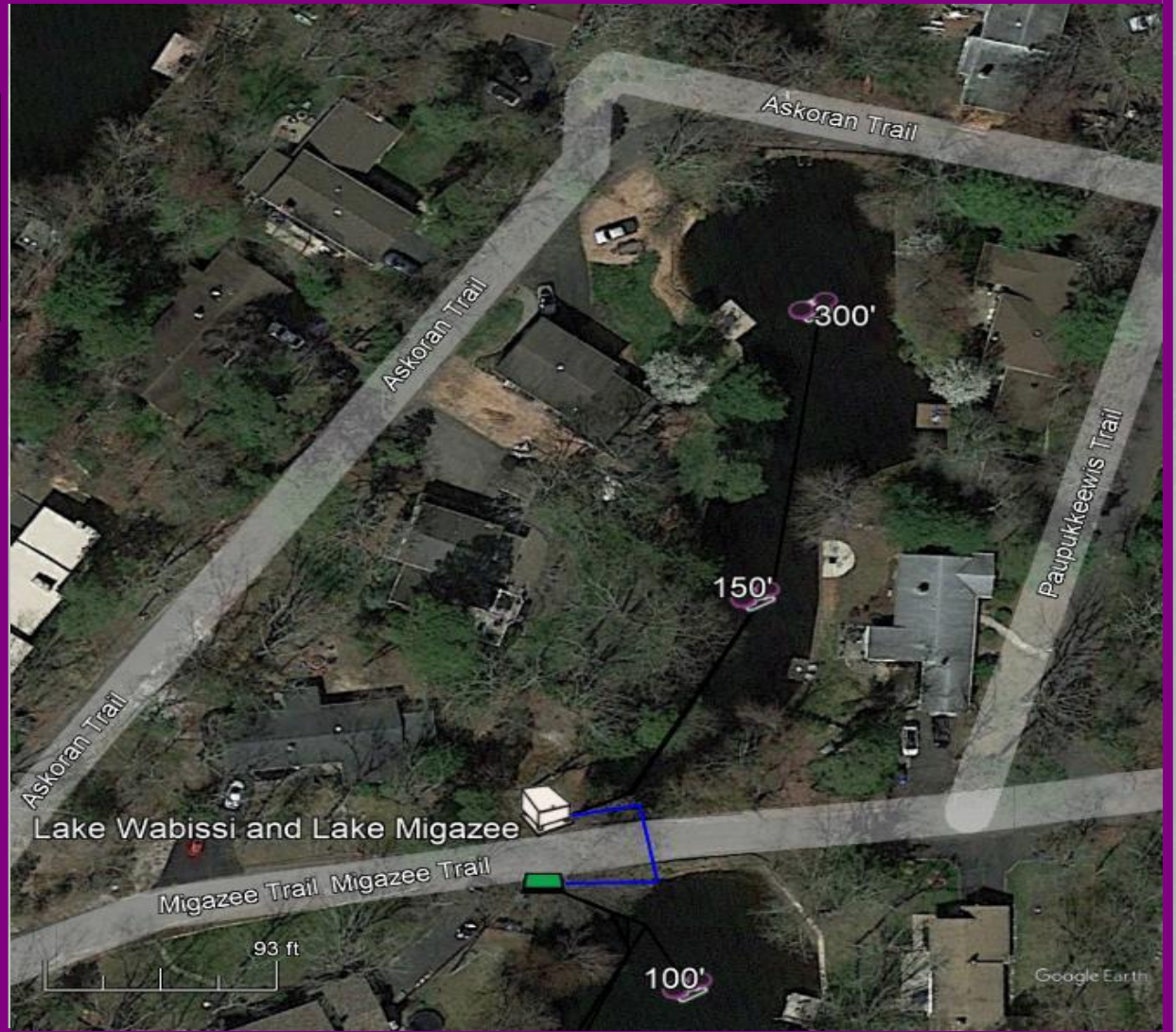


- Legend**
- Compressor Cabinet
 - AirStation
 - BottomLine Tubing

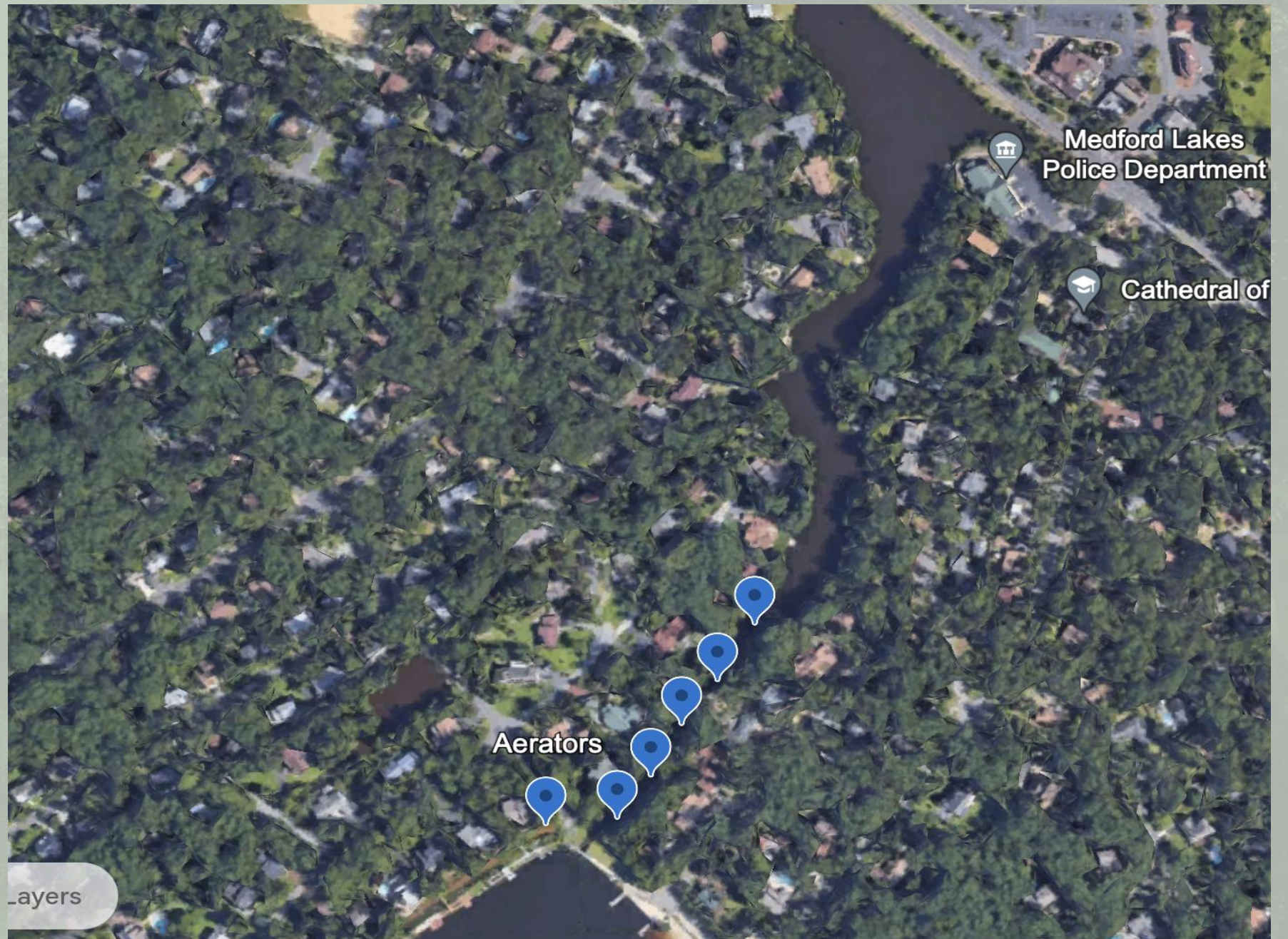
- Optional Equipment**
- Shoreline Valve Box
 - 1" PVC Pipe

Site and System Specifications

Surface Acres:	0.5
Perimeter Feet:	800
Lake Volume, Gal.:	762,100
Total Acre Feet:	2.3
# of AirStations:	2
CFM / AirStation:	1.46
GPM / AirStation:	1,139
Daily Pumpage:	3,279,647
Turnovers/Day:	4.30
System PSI:	5.8
Date:	9/15/23



LAKES RESTORATION



LAKES RESTORATION



LAKES RESTORATION





LAKES RESTORATION

2024 Planned “Lakes Restoration” Activity

- Dam Inspections as required by NJ Dam Safety
 - (Ballinger, Sioux, Wagush Levee)
- Wauwaukashe Project
- Wagush Trail Drainage Project
- Relocate hydro-pumps (2) to Meeshaway Lake and TBD location.
- Electrical installation for Meeshaway and Kawasea Lakes, and Wagush Levee.
- Aerator purchase and installation Meeshaway and Kawasea Lakes.